

ADS1600W

brother
at your side



With the ADS1600W scanning, organising and sharing information with multiple users is simple.

True wireless scanning straight to your mobile device or to the cloud combined with intelligent software allows your information to go further.

- 2-sided scanning in a single pass
- 6.8cm LCD touchscreen
- Built-in wireless connectivity
- Scan your documents directly to the cloud or mobile device
- Plastic ID card slot
- Compatible with Windows® and Mac
- Professional software suite included

Fast. Efficient.

Intelligent scanning at your fingertips

The ADS1600W boasts a wide range of features designed to make your day more efficient and productive. When combined with the included powerful software suite, the ADS1600W can easily scan, share and organise your documents for easy retrieval of important information.



6.8cm LCD touchscreen

Product features:

High quality

- Up to 600 x 600 dpi
- Auto image rotation (if page placed upside down)
- Auto de-skew (corrects documents scanned out of line)
- Auto crop
- Background colour removal
- Blank page detection & removal

Compatibility

- The supplied TWAIN, WIA & ISIS drivers allow seamless integration into various document management systems

Easy to use

- 6.8cm LCD touchscreen including web connect enables scanning directly to popular cloud storage solutions
- 20 page Automatic Document Feeder (ADF)
- Built-in wireless connectivity allows multiple users to share the device

Compact and flexible

- Compact dimensions 285(W) x 103(D) x 84(H)mm
- 2-sided scanning
- Scan anything from business cards, plastic ID cards, photographs, receipts and up to A4 2-sided documents

Fast and efficient

- Single sided scan speed up to 18ppm (pages per minute) in monochrome and colour
- 2-sided scan speed up to 36ipm (images per minute) in monochrome and colour
- Scan to various destinations including: image, e-mail, e-mail Server, file, OCR, Network, FTP, USB flash memory, cloud and SharePoint®1
- Dedicated plastic ID card slot

Scan directly to the cloud

- PC-free scanning straight to the cloud for easy sharing and storage. Everyone within your organisation can then access the information even on their mobile devices.

The bundled suite of software includes:

The ADS1600W is bundled with powerful software to become the perfect solution for document management and improved workflow, helping you to access and retrieve documents whilst away from the office. Share documents to improve communication and collaboration, cutting down the amount of paper you have to travel with.

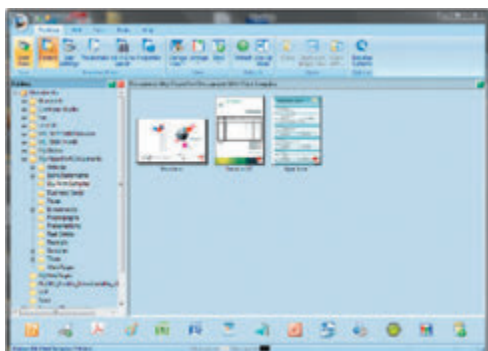
Nuance™ PDF Converter Professional 8

Allows users to improve the way they create, convert, securely share PDF files and collaborate.



Nuance™ PaperPort™ 12SE (Windows®)

Powerful document management, editing and PDF creation program with connector for Microsoft® SharePoint®.



NewSoft® Presto!® PageManager 9 (Mac)

Scan and organise digitised files. View, edit, e-mail or save files as searchable PDF, HTML, RTF, or TXT files.

NewSoft® Presto!® BizCard 6 (Windows® and Mac)

Scan and export editable contact information directly to Microsoft® Outlook® and other contact management systems.

Control Center 4 (Windows®) / Control Center 2 (Mac)

Brother Control Center enables you to customise your settings to make scanning your documents more efficient.

“This scanner packs many features into such a small, compact design”





Scan

Scan your documents into searchable PDF files.



Archive

Archive your documents using the powerful bundled software.



Search

Quickly and easily retrieve your documents for editing, viewing, sharing or printing.

General

| | |
|---|--|
| Scanner Type Scanning Modes Image Sensor | Automatic document feeder (ADF), automatic 2-sided scanning Colour, greyscale & monochrome 2 x CM OS dual CIS (contact image sensor) 1 x front and 1 x rear to enable single pass 2-sided scanning |
| Interface Wireless Setup Wireless Security Display | Hi-Speed USB 2.0, Wireless 802.11b/g/n WP S, AOS WE P 64/128 bit, WPA-PSK (TKIP/AES), WPA2-PSK (AES) 6.8cm colour touchscreen |

Scanning

| | |
|---|--|
| Standard Colour & Mono Scan Speed 2-Sided Colour & Mono Scan Speed to 300 dpi | Up to 18ppm (pages per minute) A4 up to 300 dpi |
| Optical Scan Resolution Interpolated Scan Resolution Colour Depth Gray Scale Supported File Formats | Up to 1,200 x 1,200 dpi (dots per inch) Up to 600 x 600 dpi (dots per inch) 30-bit internal & 24-bit external 256 levels JPEG, TIFF, & PDF (standard, archive (PDF/A), searchable and password protected) |
| Scan to USB | Scan directly to a USB flash memory drive, removing the requirement for a PC |
| Scan to E-mail Scan to E-mail Server Scan to OCR | Scan documents directly into your e-mail communications software Scan documents directly to E-mail addresses via your E-mail server Scan documents directly into your word processing application, e.g. Microsoft® Word, for instant editing |
| Scan to File Scan to Image Scan to Searchable PDF | Scan directly to a file on your computer or network Scan directly into your preferred image editing software Scan documents into a PDF file, which enables users to search for key words inside it |
| Scan To Network Scan to Mobile Devices Scan to Cloud | Scan directly to a network folder (Windows® only) Scan directly to a mobile device with the Brother iPrint&Scan app Scan to the following web services: Box, Dropbox, EVERNOTE®, Facebook, FLICKR®, Google Drive™, PICASA™ & SkyDrive® |
| Scan to FTP | Scan directly to an FTP server |

Scanner Driver

| | |
|--------------------|--|
| Windows® | IS IS ² , TWAIN & WIA (Windows® 8, Windows® 7, Windows® Vista 32 & 64 bit versions & Windows® XP 32 bit versions) |
| Macintosh Linux | TWAIN & ICA (Mac OS X v10.6.8, v10.7.x, v10.8.x) SANE ² |

Software for Windows®

| | |
|---|---|
| Brother Control Center 4 NewSoft® Presto! BizCard® Nucance® PaperPort® 12SE | Easy to use scan software from Brother 6 Global business card management solution Powerful document management, PDF creation and editing, including connector for Microsoft® SharePoint® Powerful PDF creation and management software |
| Nucance® PDF Converter Professional 8 | |

Software for Mac

| | |
|--|---|
| Brother Control Center 2 NewSoft® Presto! BizCard® NewSoft® Presto!® PageManager® 9 | Easy to use scan software from Brother 6 Global business card management solution Document management & sharing program |
|--|---|

Paper Handling

| | |
|---|--|
| Paper Input Custom Paper Types & Sizes Long Paper Scanning Business Card Scan Support Plastic Card Scan Support Receipt Scanning | Up to 20 sheets Between 51 mm - 215.9 mm in width & 70 mm - 297 mm in length Yes, up to 215.9 mm wide & 863 mm long (1 at a time) Yes (1 at a time) Yes (1 at a time) Yes, with carrier sheet |
|---|--|

Duty Cycle

| | |
|---------------|-----------------|
| Maximum Daily | Up to 500 pages |
|---------------|-----------------|

Weights & Dimensions

| | |
|----------------|------------------------------|
| With Carton | 380(W)x170(D)x207(H)mm 2.6KG |
| Without Carton | 285(W)x103(D)x84(H)mm 1.6KG |

Environment

| | |
|--------------------------------|--------------|
| Power Consumption (Scanning) | 14W |
| Power Consumption (Ready) | 4W |
| Power Consumption (Deep Sleep) | 1.5W |
| Power Consumption (Off) | 0.25W |
| Sound Pressure Level (Active) | 47dB or less |
| Sound Power Level (Active) | 59dB or less |

¹ Requires Presto!® PageManager® 9 SE or Nucance® PaperPort 12 that comes bundled with the machine, ² Download from Brother solutions centre <http://solutions.brother.com>

Contact:

brother
at your side

www.brother.co.nz



Working with you for a better environment
www.brotherearth.com