

DS720D

brother
at your side



Mobile 2-Sided (duplex) Document Scanner

The DS720D makes easy work of scanning 2-Sided (duplex) documents, ready to be shared and organised. Powered simply by USB from your laptop the powerful industry leading software takes care of the rest.

- 2-Sided (duplex) scanning in a single pass
- USB powered
- Compatible with Windows® and Mac
- Up to 600 x 600 dpi
- Compact dimensions
- Professional software suite included

With 2-Sided (duplex) scanning, you can get more done

The all new DS720D combines style and design with a wide range of features. With the ability to scan a range of 2-Sided (duplex) documents including plastic ID cards, receipts, business cards and A4 2-Sided (duplex) documents, now your day can be much more productive.



2-Sided (duplex) scanning



Compact



USB powered



High quality

Product features:

High quality

- Up to 600 x 600 dpi
- Scan your documents in high quality ready to be stored in the cloud

Compatibility

- The supplied TWAIN driver allows seamless integration into various document management systems

Easy to use

- One-touch scanning technology
- Powered simply by USB

Compact

- Compact dimensions 290.5(W) x 66.9(D) x 40.7(H)mm
- Weighs only 500g

Fast and efficient

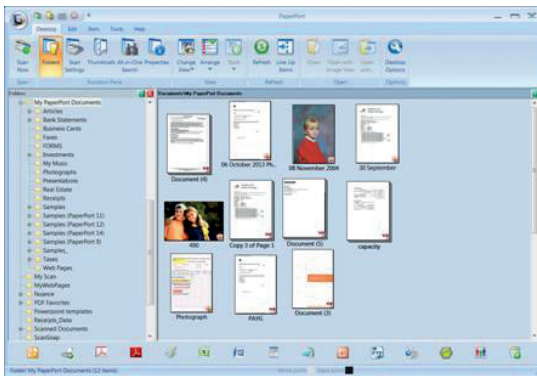
- Single-sided scan speed up to 7.5ppm (8 seconds per page) in mono and colour
- 2-Sided (duplex) scan speed up to 5ppm/10ipm (12 seconds per page) in monochrome and colour
- Scan to various destinations including: e-mail, file, app, printer, shared network folder, OCR, FTP and cloud
- Scan anything from business cards, plastic ID cards, photographs, receipts and up to A4, 2-Sided (duplex) documents

The bundled suite of software includes:

The DS720D is bundled with powerful software to become the perfect solution for document management and improved workflow, helping you to access and retrieve documents whilst away from the office. Share documents to improve communication and collaboration, cutting down the amount of paper you have to travel with.

Nuance™ PaperPort™ 12SE (Windows®)

Powerful document management, editing and PDF creation program with connector for Microsoft® SharePoint®.



Button Manager V2 (Windows®)

Configure several scan to options using the direct scan button on the scanner.

NewSoft® Presto!® BizCard 6 (Windows® and Mac)

Scan and export editable contact information directly to Microsoft® Outlook® and other contact management systems.

DSmobileCapture (Windows® and Mac)

A utility to capture and view scanned documents from your mobile scanner.

“Fast, productive and built with you in mind”



With the ability to scan 2-Sided (duplex) documents at the touch of a button and powered simply by USB, the sleek and compact DS720D is the ideal solution for the mobile professional. This stylish solution is perfect for those looking to scan invoices, customer order forms, sales orders and much more.



Scan

Scan your documents into searchable PDF files.



Archive

Archive your documents using the powerful bundled software.



Search

Quickly and easily retrieve your documents for editing, viewing, sharing or printing.

Technical Specifications

General	
Image Sensor Paper Sensor Interface	Dual CIS (Contact Image Sensor) for 2-Sided (duplex) scanning Optical photo sensor Hi-Speed USB 2.0
Scanning	
Scan Speed	7.5ppm (8 seconds per page) A4 up to 300 dpi Mono & Colour Single sided (Simplex)
Scan Speed 2-Sided (duplex)	5ppm/10ipm (12 seconds per page) A4 up to 300 dpi Mono & Colour 2-Sided (duplex) (Duplex)
Resolution Optical	Up to 600 x 600 dpi
Resolution Interpolated	1200 dpi
Colour Depth	48-bit internal & 24-bit external
Gray Scale	256 levels
Supported File Formats	JPEG, TIFF, BMP, GIF, (PNG Button Manager only) & PDF (standard and searchable)
Scan to Destinations	Email Client/ OCR/ Image/ File/ FTP/ Archive / Network/ Cloud / Printer (All via the Button Manager V2)
Scanner Driver	
Windows® Macintosh Linux	TWAIN (Windows® 8, Windows® 7, Windows Vista® & Windows® XP) TWAIN (Mac OS X 10.6.X, 10.7.X, 10.8.X) TWAIN and Scan App
Software for PC	
DsMobileCapture Button Manager V2 Nuance™ PaperPort™ 12SE NewSoft® Presto!® BizCard 6	Easy to use scan software One touch scanning to E-mail, File, App, Folder, FTP or Printer Scan, share, search and organise Documents on your PC Global business card management solution

Software for PC	
DsMobileCapture Presto!® BizCard 6 Presto!® PageManager 9	Easy to use scan software Global business card management solution Entry level document management & sharing program
Paper Handling	
Paper Input Paper Sizes 1 sided Paper Sizes 2 sided Paper Weights	1 sheet Between 55mm - 215.9mm in width & 90mm - 812.8mm in length Between 55mm - 215.9mm in width & 90mm - 406.4mm in length Between 60 g/m² & 105 g/m²
Weights & Dimensions	
With Carton Without Carton	354(W) x 254(D) x 70(H)mm 1.18Kg 290.5(W) x 66.9(D) x 40.7(H)mm 500g
Environment	
Power Requirement Power Consumption Power Consumption Sound Pressure Level	USB bus-power 5V DC 2.5W (Scanning) 1W (Ready) 50dB (Active)



brother
at your side



facebook.com/BrotherNZ
www.brother.co.nz